



ADD-ON Philosophy

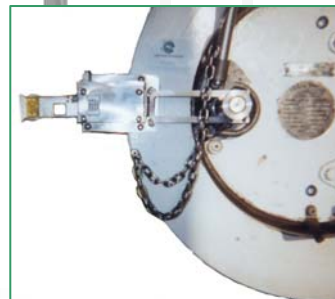
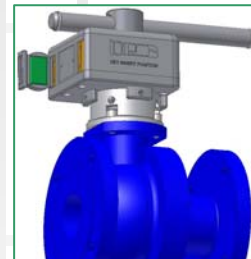
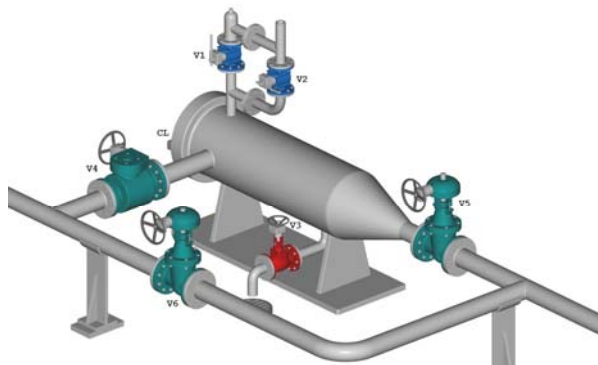
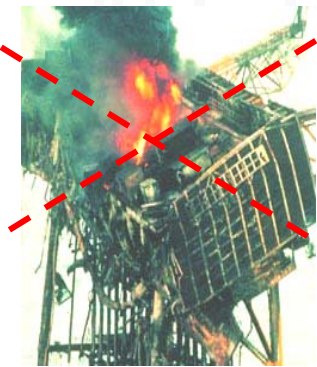
Loopholes in your plant safety

In many instances your plant runs without our equipment, however, we quite often see that there are still loopholes in the safety. A small human error could cause an enormous catastrophe. Changing your plant for this is normally very complicated and expensive.

The Netherlocks ADD-ON devices will improve the safety and operability in a simple way without taking the process equipment out of production. We build our designs, solutions and philosophies on 25 years of industrial experience and incorporate the following product groups.

Process Interlocks as ADD- ON - in case you need to operate components in a pre determined order

Nether-locks: ADD-ON sequence control



Locks are one of the solutions to improve the safety; uniquely coded keys guide the operators step by step. This avoids human error that could lead to accidents, pollution, contamination, etc... One free key can only fit in one free unique key slot. Sequential mistakes are eliminated. Every imaginable potential dangerous sequence can be made failure proof with locks.

NETHERLOCKS SAFETY SYSTEMS and VALVE CONTROL B.V.

J. Keplerweg 14, 2408 AC Alphen aan den Rijn, The Netherlands

Tel: +31 (0)172 471339 Fax: +31 (0)172 491342

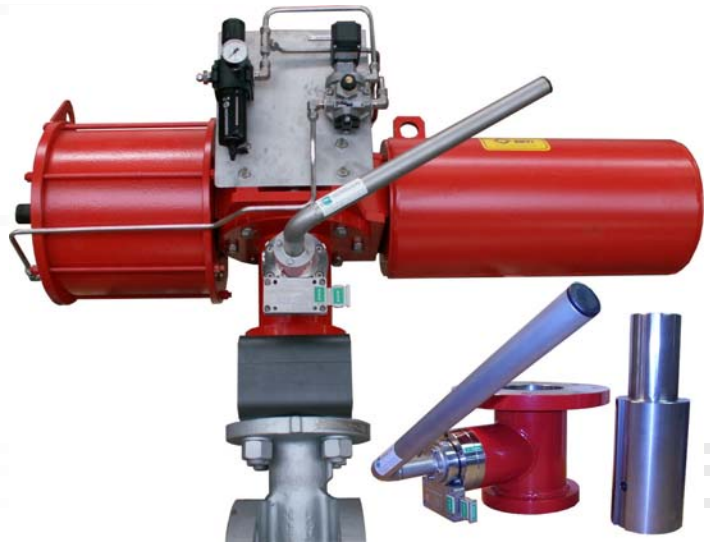
E-mail: sales@netherlocks.com Internet: www.netherlocks.com



Valve Control Units as ADD-ON - to test, operate or for remote signaling

FAITH: ADD - ON test device

The Netherlocks FAIL ACTION INTEGRITY TEST HANDLING (FAITH) is a unique testing device that makes it possible to test your actuator-valve package in life (operating) plants. No difficult software, cabling, training, etc. is required!! The FAITH is 100% safe and simple. The unique system assures that an ESD signal overrides the test.



Nether-Drive - ADD-ON Portable pneumatic operator



The Netherlocks KMS is an ADD-ON portable pneumatic actuator that improves the "life" of the operator and makes his work far more valuable. Often valves have more than 400-500 rotations; which could take hours to operate from open to close or vice versa. Waste of time! The KMS allows you do it in minutes, with little strain on the operator. The operator is therefore much more efficient.

Let's make it safe!

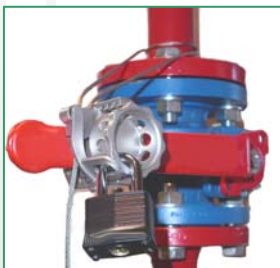
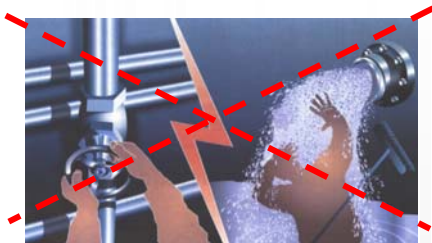


Nether-Pos VPI - ADD-ON position signaler for hand wheel operated valves



The Netherlocks VPI is an ADD-ON valve position indicator especially for hand wheel operated valves. Normally we see that in order to create a remote signal weak brackets and free hanging switches are used; with all their problems. With the VPI you have a device that is integrally mounted onto the host equipment. All switches are protected and pre-wired. The remote signal is 100% reliable.

Nether-Safe as ADD-ON - position security



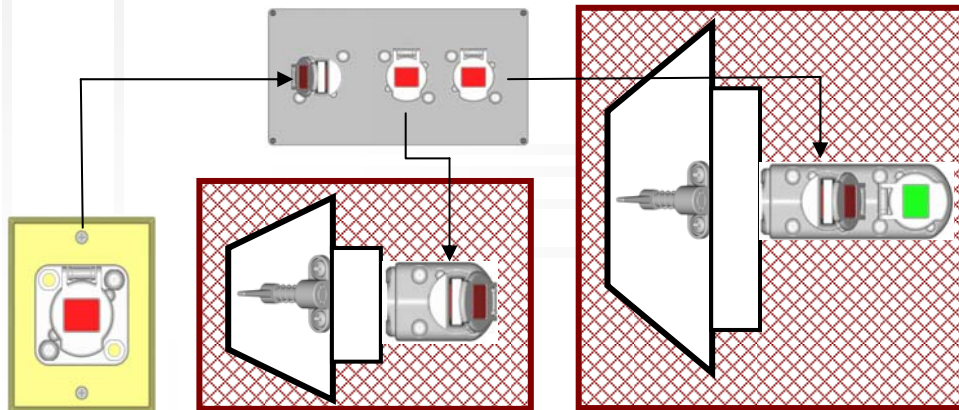
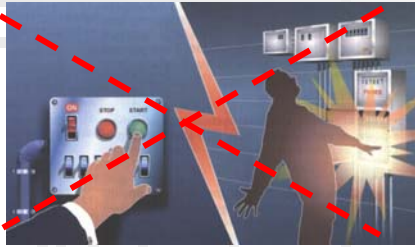
The Netherlocks Lock Out devices are unique, strong, easy to use and maintenance free. The patented Netherlocks NL-H is a stainless steel AISI 316 one size fits all devices. Imagine just one device in stock for all lockout applications! Great cost saving and a better stock control.

Let's make it safe!



NETHERLOCKS

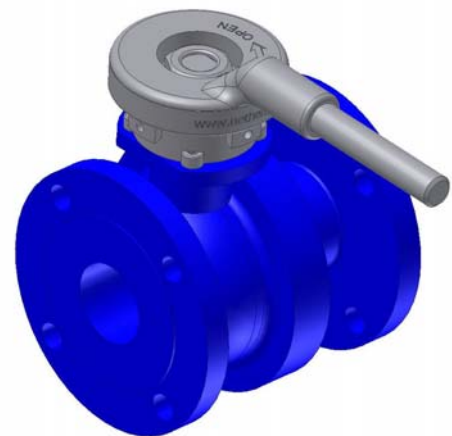
Nether-Guard - ADD-ON wireless switches



Netherlocks "wireless switches" are used to easily and conveniently safeguard switches, valves, doors, dangerous areas, transport belt, mixers, granulators, brick crushing machines, etc... In no circumstance a service engineer or machine-operator could come in danger. Power supply is always switched-off in case there is access to the machine.

Nether-Lever - ADD-ON spring return safety

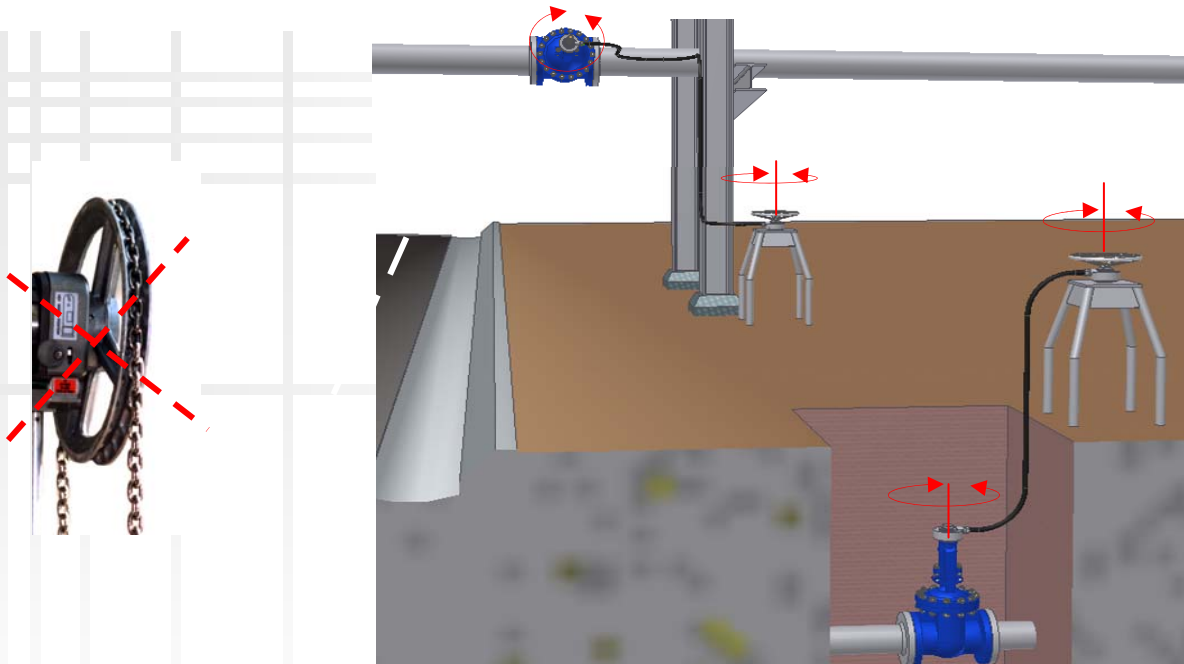
In many situation it is a must that a valve will return to its safe position. The Netherlocks spring return lever is an ADD ON device that guarantees this requirement. In case you release the lever it will automatically operated to its safe position. Ideal for sampling.



Let's make it safe!



Nether-Flex – ADD-ON operational flexibility



Valve location a problem? ..no problem!

Nether-Flex is a very versatile product consisting of two stations, joined by a unique linear drive cable.

This equipment enables valves and other wheel-operated devices in remote, hard to reach or hazardous locations to be operated easily from a conveniently located hand wheel.



*Just ADD-ON and
make it safe!*



Let's make it safe!